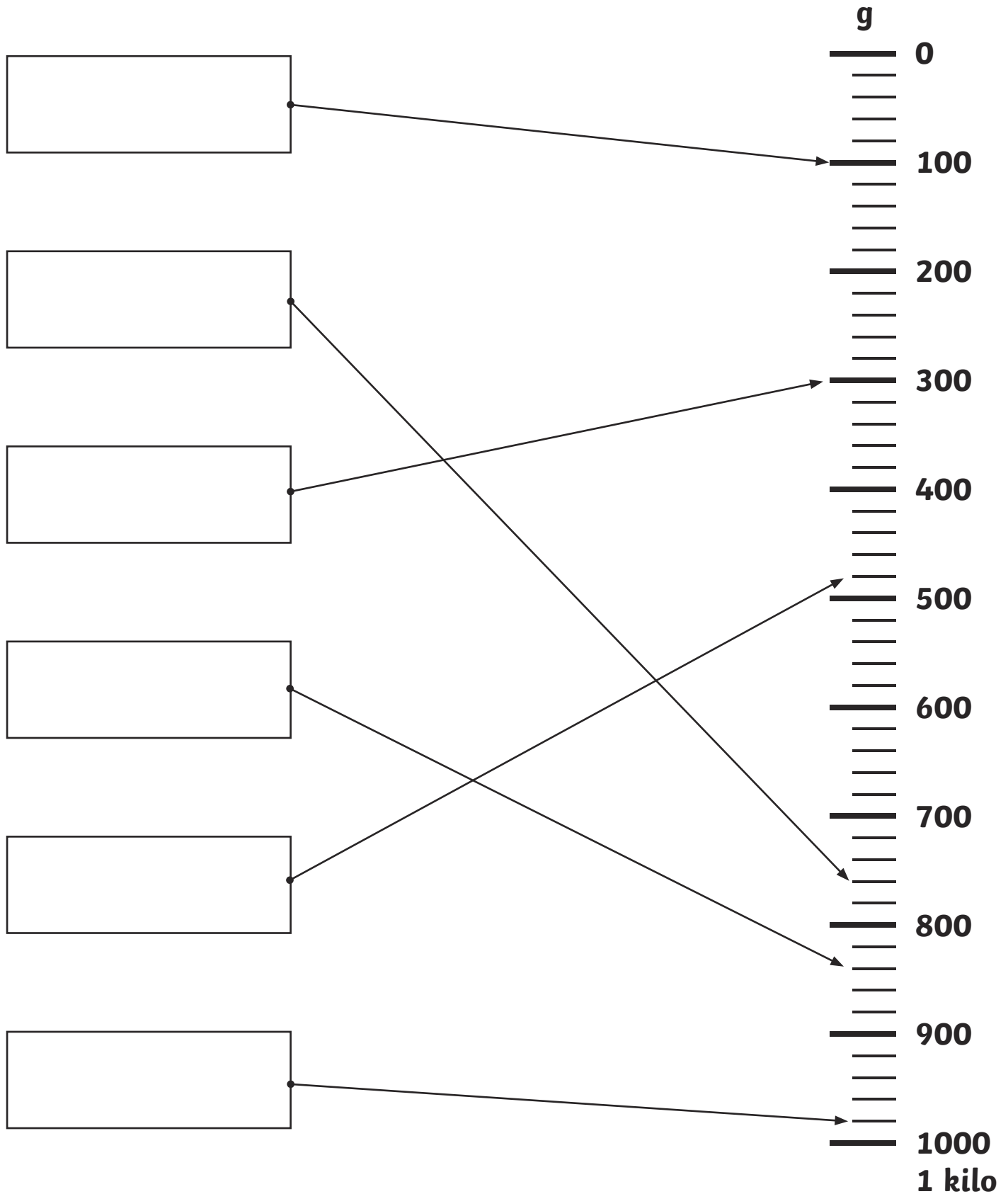


Reading Scales

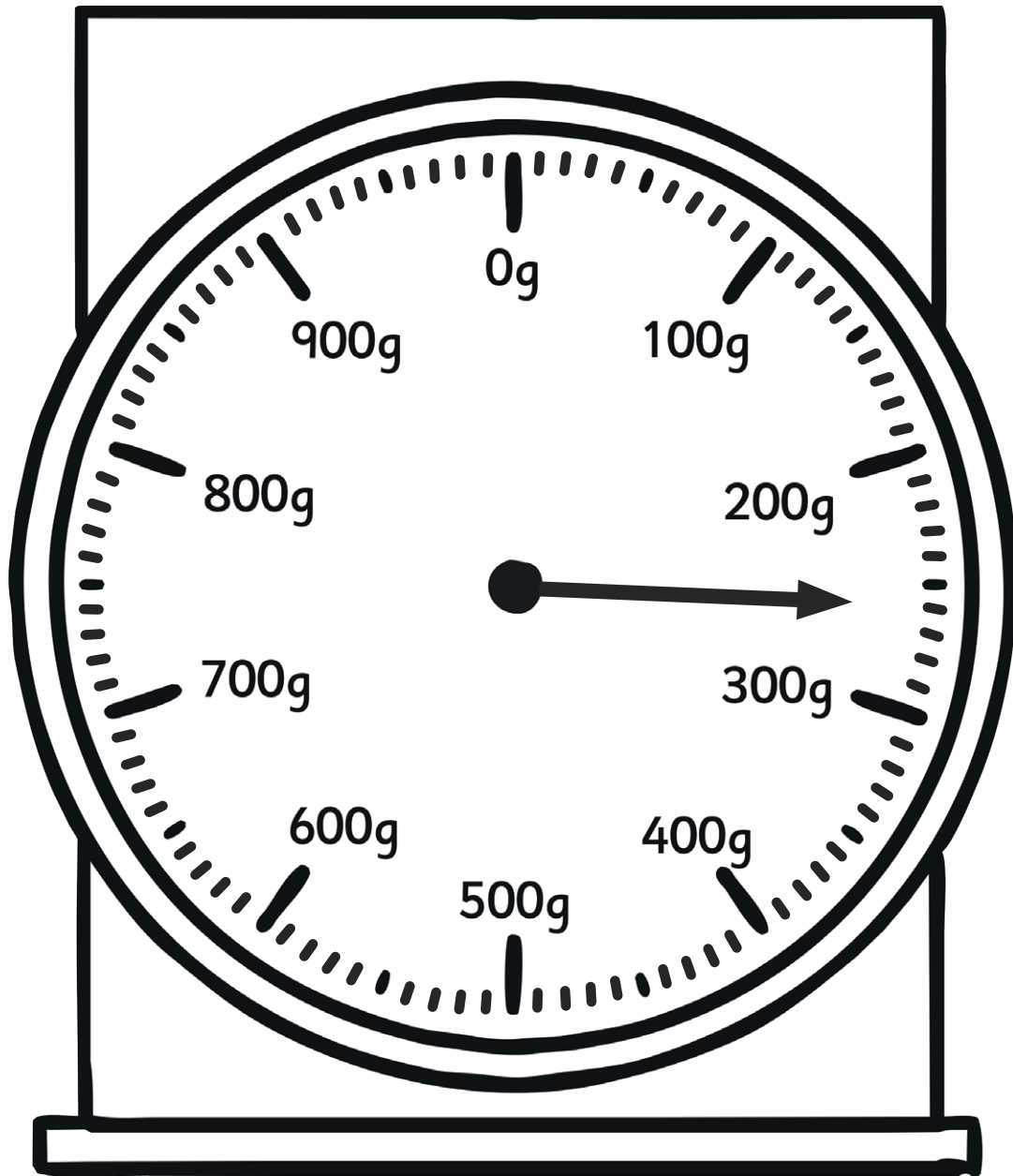
The scale shows 1 Kilogram, each large division is 100 grams and each small division is 20 grams.

Write in the reading for each of the arrows.



Reading Scales

Weighing scales can be read like a clock, the dial indicator moves as the weight increases. Each big line is 100g, each small line is 10g, the arrow shows 260g.



Draw arrows on the scale to show these weights:

- a. 520g
- b. 400g
- c. 960g
- d. 1000g
- e. 180g